

DATASHEET

Scality ARTESCA hardware appliance for Veeam

Simple S3 object storage for immutable, cyber-resilient ransomware protection

Your last line of defense against any threat to data recoverability? A cyber-resilient storage solution.

Immutable storage has become a cornerstone of cybersecurity. But in the era of AI-powered ransomware, it's no longer enough. Protecting data against the widest possible range of current and future threats requires a new way of thinking — one where immutability is just one piece of the puzzle.

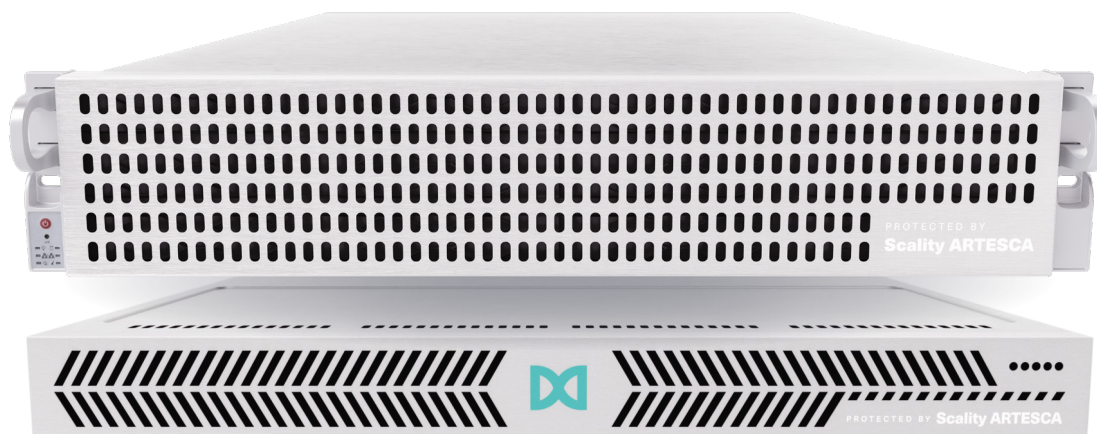
Designed to provide the strongest form of immutability plus end-to-end cyber resilience, Scality ARTESCA is the only solution that safeguards data at five core levels for unbreakable protection against the cyberthreats of today and tomorrow.

With backup repositories targeted in 93% of ransomware attacks¹, organizations are seeking surefire ways to mitigate risk, avoid paying extortionate ransoms, and maintain uninterrupted business operations amidst inevitable assaults on their data.

Raising the stakes even higher is a new era of AI-supercharged cyberthreats that's not just on the horizon — it's here now. To protect data against increasingly sophisticated and evasive threats, your solution must meet a new standard of protection.

Scality ARTESCA is built on the strongest zero-trust data security principles to meet the evolving real-world data protection needs of cybersecurity-obsessed and cost-conscious organizations. Offering an optimal balance of security, performance, and ease of use, it's the most secure, efficient, and simple target for Veeam backups.

Become unbreakable against ransomware — no deep storage or OS experience required — with the ARTESCA hardware appliance for Veeam*.



**HYBRID
APPLIANCE**

**ALL-FLASH
APPLIANCE**

Deploy ARTESCA for Veeam as a **turnkey appliance**

Looking for maximum security, performance, and simplicity?
Our hardware appliance was purpose-built to deliver.

The result? Unbreakable ransomware protection for Veeam Data Platform — no expertise required. Choose the size that matches your immutable backup needs, and be up and running in less than an hour.

- **Tuned for Veeam Backup & Replication v12, Veeam Backup for Microsoft 365 and Kasten K10** for ransomware-proof backups across cloud and on-prem backup workloads
- **Hybrid or all-flash** deployments to match your performance requirements
- **Five capacity points:** Single server 41TB, 73TB, 82TB and 165TB or a three server 377TB option
- **QuickStart Wizard** simplifies basic setup and network integration
- **Veeam Assistant** configures all storage resources needed to create an object repository in Veeam. Answer a few questions and get an account with a dedicated user and secure custom policy, an immutable bucket with your desired name, access key and secret key pair. Smart Object Storage API (SOSAPI) is auto-configured in no time. A single click copies details from the assistant, enabling seamless entry into the Veeam UI.

Key features

Simplicity

- Built-in Veeam Assistant for speedy and best-practice integration
- Streamlined, intuitive, feature-rich user interface
- New software update notification and simple upgrade including OS
- Integrated high availability in multi-server deployment

Security

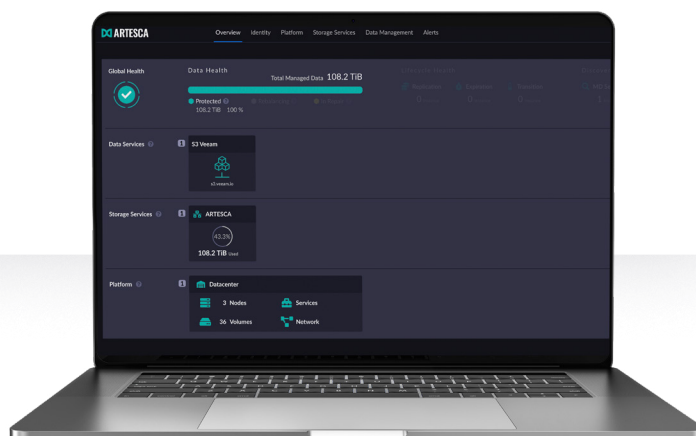
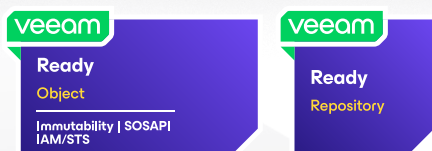
- Immutability guaranteed with S3 Object Lock, data retention policies and compliance mode
- Secure S3 connections via HTTPS/TLS endpoints
- AES 256-bit data encryption-at-rest
- S3 v4 authentication & access control policies
- Hardened, streamlined and prepackaged operating system
- Built-in auto configured firewall rules and locked down ports
- Secure MFA-enabled admin UI

Detailed monitoring and management APIs

- Comprehensive S3 API support
- AWS IAM-compatible identity management
- Comprehensive support of Veeam's full feature set: Immutability via object locking, Direct to Object (S3 API), SOSAPI, Multi-Bucket SOBR, IAM/STS Secure Mode, VM Instant Recovery, VM SureBackup

Data protection

- Local and network erasure coding for highest levels of data durability with lowest overhead and improved recovery performance
- Data immutability via S3 Object Lock, plus end-to-end CORE5 cyber resilience



1 solution. 5 levels of **cyber resilience**.

Scality ARTESCA is the only backup storage solution that enables end-to-end cyber resilience with unbreakable data protection at every level of the system — from API to architecture.

1. API-level resilience

By mimicking application commands, ransomware attackers attempt to encrypt, modify, or delete stored backups.

ARTESCA stops these attacks in their tracks with support for S3 Object Locking APIs, ensuring backups are immutable the instant they're created.

- Amazon S3 object locking immutability with configurable data retention policies and compliance mode.
- Veeam v12 “Direct to object” backups and Smart Object Storage API (SOSAPI) support, plus automated enforcement of validated IAM access control policies.

2. Data-level resilience

While application-level immutability provides powerful defense against ransomware, it can't prevent data exfiltration attacks or other malicious access on the network or by unauthorized admins.

ARTESCA thwarts would-be attackers with advanced data-at-rest encryption, user authentication, secure connections and more.

- Secure HTTPS/TLS S3 termination and AES 256-bit data encryption-at-rest.
- Multi-factor authentication (MFA) for secure UI logins, plus automated firewall rules on deployment.

3. Storage-level resilience

If attackers can't defeat higher-level defenses, they may attempt to penetrate the system below the API layer in order to modify data on the physical disk drives themselves.

With ARTESCA, the success of these low-level attacks is virtually impossible thanks to distributed erasure coding technology that renders data indecipherable.

- Data is encoded and spread across the cluster, impeding an attacker's ability to extract meaningful data.
- Metadata in secure repository on intrinsically immutable object storage layer.
- Scale-out from 50TB to multi-petabytes with dual-level data protection for up to 11 nines of durability.

4. Geographic-level resilience

Data stored in a single location is particularly vulnerable to cyberattacks. Even air-gapped systems can be breached by attackers with unauthorized physical access, or destroyed by fires, flooding, or other natural disasters.

To eliminate the risks of single-site backup storage, ARTESCA employs replication for mirroring of data across data centers — and enables easy multi-site deployment for application-managed replication.

- Deploy ARTESCA in remote locations for immutable offsite storage to eliminate the “all data in one place” problem.

5. Architecture-level resilience

Storage solutions designed before the ransomware era can be defeated by attacks below the API, network and administrative layers.

ARTESCA is true object storage solution that's intrinsically immutable, meaning data is always preserved in its original form once stored. A security-hardened operating system mitigates the impact of common vulnerabilities and exposures.

- Integrated Linux operating system precludes root access and reduces exposure to CVEs.



Hardware appliance specifications

	1N-41TB-F	1N-82TB-F	1N-165TB-F	1N-73TB-H	1N-165TB-H	3N-377TB-H
Form factor	1U			2U		8U
Boot drives	2x 960GB NVMe M.2			2x 480GB NVMe M.2		
Service drives	2x 1.92TB NVMe E3.S			2x 800GB NVMe U.3	2x 1.6TB NVMe U.3	6x 3.2TB NVMe U.3
Data drives	14x 3.84TB TLC NVMe	14x 7.68TB TLC NVMe	14x 15.36TB TLC NVMe	12x 8TB 3.5" SAS 7.2k	12x 18TB 3.5" SAS 7.2k	36x 18TB 3.5" SAS 7.2k
Raw capacity	54TB	108TB	215TB	96TB	216TB	648TB
Usable capacity	41TB	82TB	165TB	73TB	165TB	377TB
CPU	1x AMD EPYC™ 9354P 32 core 3.25GHz			1x AMD EPYC™ 9254 24 core 2.9GHz		3x AMD EPYC™ 9254 24 core 2.9GHz
Memory	192GB, 12x 16GB DDR5-4800			192GB, 12x 16GB DDR5-4800		576GB, 36x 16GB DDR5-4800
Data protection	In-server replication and erasure coding allow for the simultaneous failure of two data drives while maintaining full read/write access to the data					Dual-layer replication and erasure coding in server and at the network level allows for the simultaneous loss of an entire server, plus one data drive in each remaining server
	Proactive failed drive monitoring with immediate self-healing of data, S3 Object Lock in governance mode and compliance mode, S3 versioning					
Hardware Redundancy	Hot swappable disk drives, 1+1 hot swappable power supplies, RAID1 service drives, RAID1 boot drives					Additionally, the three-server appliance includes dual switches with 1+1 power supplies and fans
Veeam B&R performance (1MB block size)	Backup: up to 6.7TB per hour Restore: up to 7TB per hour			Backup: up to 5.5TB per hour Restore: up to 4TB per hour		Backup: up to 8TB per hour Restore: up to 6TB per hour
Monitoring & management	CLI, GUI, IPMI, S3 API, IAM API, Veeam SOSAPI support					
Cooling	8x 4cm heavy-duty fans			3x 8cm heavy-duty fans with optimal fan speed control		Servers: 9x 8cm heavy-duty fans with optimal fan speed control Switches: Dual hot swappable fans front to back (not reversible)
Network interfaces	2x 10GbE RJ45 2x 25GbE SFP28			Quad-Port 10GbE (2xRJ45 & 2xSFP+). Based on Intel X710		Quad-Port 10GbE (2xRJ45 & 2xSFP+) Based on Intel X710 Dedicated switches and NIC cards provided for private backend connectivity
Power supply	1600W redundant Titanium level power supply			1200W redundant Titanium level power supplies		1200W redundant Titanium level power supplies per server
Thermal rating	3799 BTU/hr (127 Vac input) 3719.9 BTU/hr (240 Vac input)	3920 BTU/hr (127 Vac input) 3838.4 BTU/hr (240 Vac input)	3464.1 BTU/hr (127 Vac input) 3391.9 BTU/hr (240 Vac input)	2276 BTU/hr (127Vac input) 2229 BTU/hr (240Vac input)	2228 BTU/hr (127Vac input) 2182 BTU/hr (240Vac input)	7360 BTU/hr (127Vac input) 7219 BTU/hr (240Vac input)
Dimensions (Width, Height, Depth)	Width 17.2" (438.4mm) Height 1.7" (43.6mm) Depth 30.4" (773.25mm)			Width 17.2" (437mm) Height 3.5" (89mm) Depth 25.5" (648mm)		Width 17.2" (437mm) Height 15" (267mm) Depth 25.5" (648mm) Plus two switches Width 17.32" (440mm) Height 3.43" (87.2mm) Depth 12.99" (330mm)
Weight	68.74 lbs (31.2kg)			77.6 lbs (35.2 kg)		253 lbs (114.7 kg)
IO Ports	1x RJ45 1 GbE Dedicated BMC LAN port 2x USB 3.0 ports (rear) 2x USB 3.0 ports (front) 1x VGA port			1x dedicated IPMI LAN port 2x USB 3.0 ports (rear) 1x VGA port 1x serial COM port (rear) TPM header		3x dedicated IPMI LAN port 6x USB 3.0 ports (rear) 3x VGA port 3x serial COM port (rear) TPM header
Environmental	Operating Temperature: 10°C ~ 35°C (50°F ~ 95°F) Non-operating Temperature: -40°C to 60°C (-40°F to 140°F), Operating Relative Humidity: 8% to 90% (Non-condensing), Non-operating Relative Humidity: 8% to 95% (Non-condensing)			Operating temperature: 10°C ~ 35°C (50°F ~ 95°F) Non-operating temperature: -40°C to 60°C (-40°F to 140°F) Operating relative humidity: 8% to 90% (non-condensing) Non-operating relative humidity: 5% to 95% (non-condensing)		
Security	Trusted Platform Module (TPM) 2.0, Silicon Root of Trust (RoT) – NIST 800-193 Compliant, ARTESCA secured and hardened software including operating system, CORE5 end-to-end cyber resilience					

**Become unbreakable.
Backup to the best.**